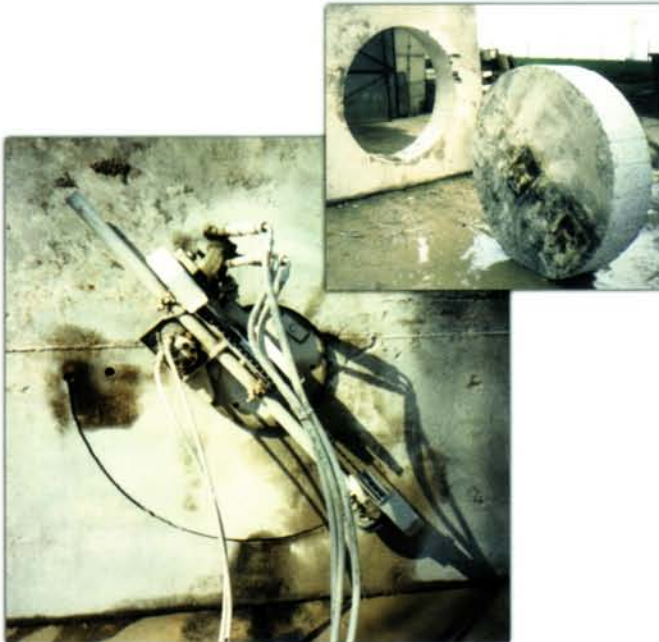




Automatic Wire Saw CSA • 500

Technical data CSA • 500

Total weight: 143 kg
 Transport dimensions: 1430 x 640 x 640 mm
 Wire storage capacity: 4,5 m bis max. 7 m*
 Weight of wire storage without drive: 113 kg
 Weight of wire drive unit: 30 kg
 Required hydraulic connected values:
 Drive: 35 l/min
 Max. working pressure: 200 - 250 bar
 Feed: 2 - 14 l/min
 Max. working pressure (feed): 100 bar
 * 2 additional rolls in wire storage required



Creating a wall opening with a circle wire saw

Operational method of circle wire saw CAZ • 3200

A core drilling of 120 mm diameter is drilled in the center of the circle to be cut. This hole serves to take up the circle wire saw and to guide the diamond wire to the opposite side. Then the wire enters the cut via guiding wheels. A hydraulic motor drives the endlessly looped diamond wire. Driven hydraulically, the circle wire saw revolves the central point and a circular opening is being cut.

Circle Wire Saw CAZ • 3200

For making circular openings with diameters between 0.5 m and 4.5 m at a wall thickness up to 1.6 m
 Flush cutting possible at a diameter of at least 1.3 m

Easiest handling and assembly at low set-up times
 Automatic cutting force control
 Wire tensioning wheel to balance the changing wire load
 Drive by hydraulic power packs offering an output of **10 to 22 kW**

Technical Data CAZ • 3200

Dimensions: 2100 x 2450 x 500 mm
 Total weight: 108 kg
 Weight of central drive unit: 42 kg
 Required hydraulic connected values:
 Drive: 30 l/min
 Max. working pressure: 200 - 250 bar
 Feed: 2 - 14 l/min
 Max. working pressure (feed): 100 bar